



Londen Land Company, LLC

Multi-Family Residential 15.16+/- Acres

Fact Sheet

Location: Southeast corner of Cave Creek Road and Rancho Paloma Drive, Phoenix, Arizona

Size: +/- 15.16 gross acres

Zoning: City of Phoenix,
R-2 designation, approval for up to 114 units

Parcel #: 211-37-001-C

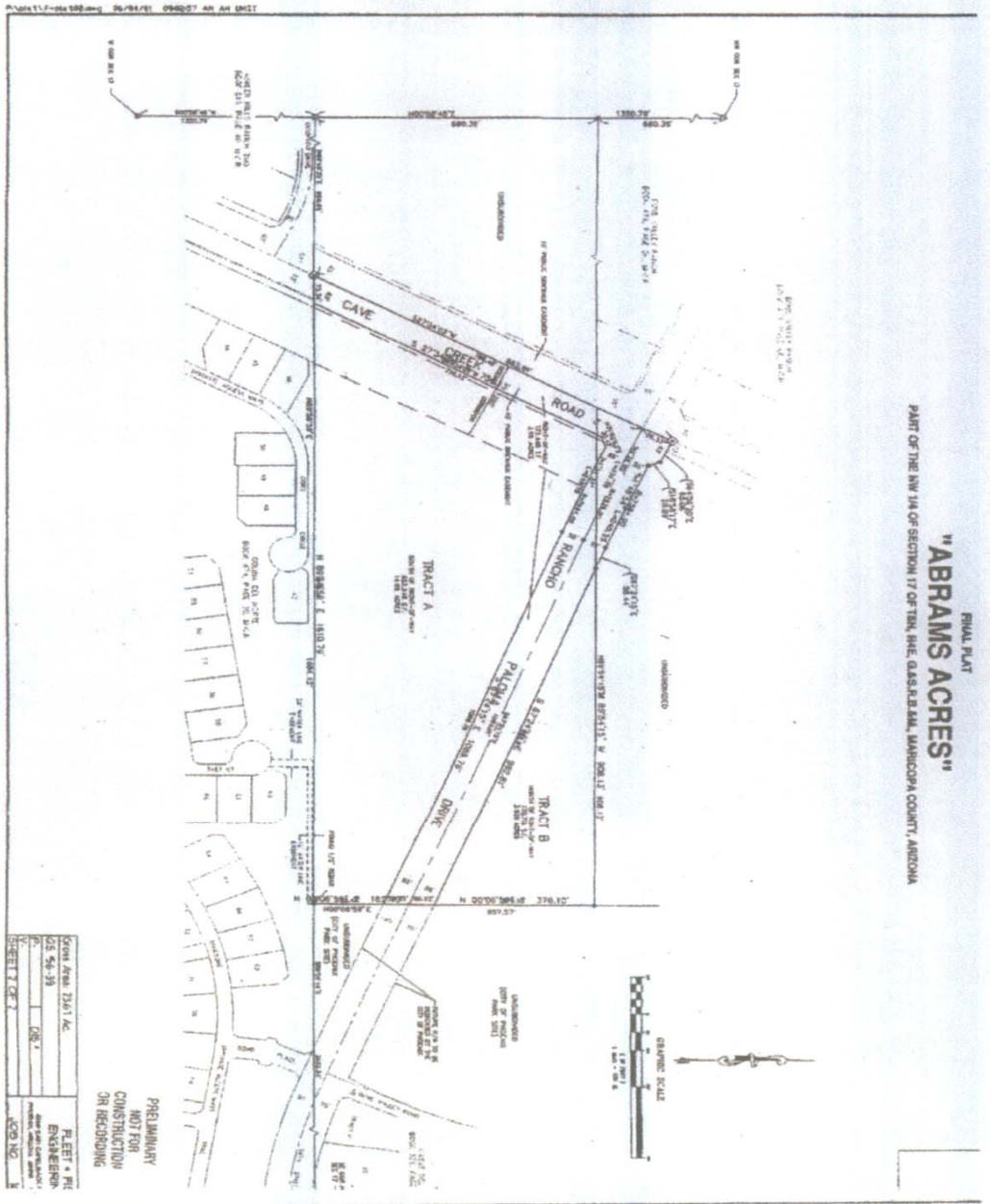
FOR INFORMATION CALL:

Londen Companies
Jack Londen and Lynn Londen
602-957-1650

4343 East Camelback Road, Suite 400 ♦ Phoenix, Arizona 85018 ♦ Phone: 602-957-1650 ♦ Fax: 602-840-9765

The information contained herein is from sources deemed reliable. We have no reason to doubt its accuracy but do not Guarantee it. It is the responsibility of the person reviewing this information to independently verify it. This package is subject to change, prior sale or complete withdrawal.

REAL ESTATE
"ABRAMS ACRES"
 PART OF THE NW 1/4 OF SECTION 17 OF T10N, R1E, GAS R. 34M, MARICOPA COUNTY, ARIZONA

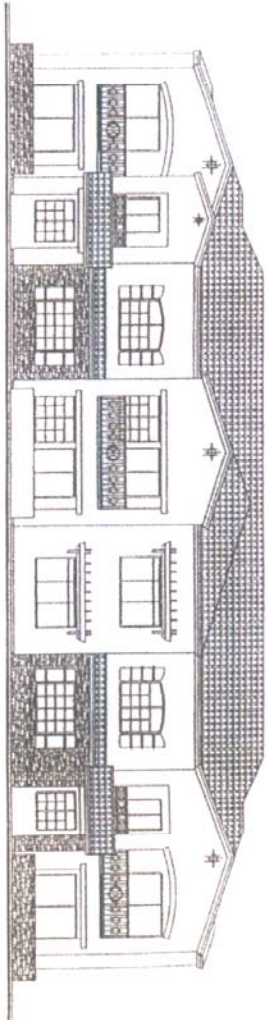


PRELIMINARY
 NOT FOR
 CONSTRUCTION
 OR RECORDING

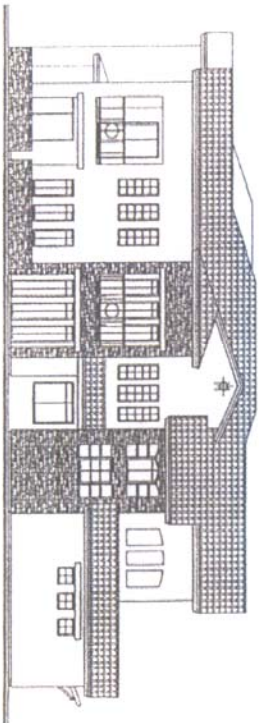
FLEET & R
 ENGINEERS
 1000 N. CENTRAL AVENUE
 PHOENIX, ARIZONA 85004
 JOB NO. 1

DATE: 05-26-20
 DRAWN BY: [Name]
 CHECKED BY: [Name]

SHEET 1 OF 2



FRONT ELEVATION
SECTION 41



SIDE ELEVATION
SECTION 41

CONCEPTUAL ELEVATIONS

88-06-2

TCR
TRUSTEES OF CALIFORNIA
RANCHO PALOMA
TRUSTEES OF CALIFORNIA

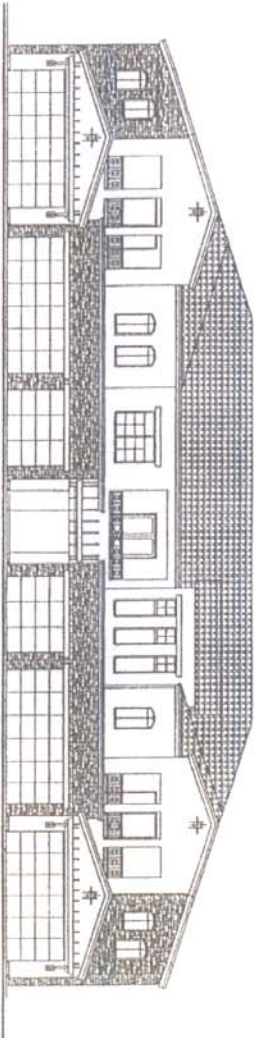
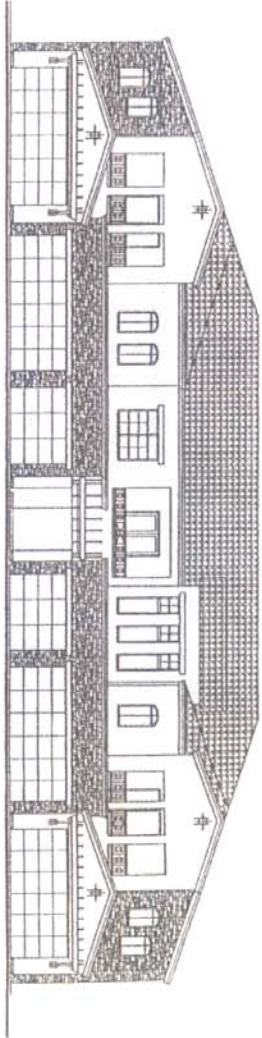
THE
ARCHITECTURAL
GROUP
INCORPORATED
 12700 WILSON AVENUE, SUITE 100
 BOSTON, MASSACHUSETTS 02118
 TEL: 617-261-1000 FAX: 617-261-1001
 WWW.ARGROUP.COM



TCR
TERRAZZO CONSULTING & ARCHITECTURE
RANCHO PALOMA

CONCEPTUAL ELEVATIONS & PERSPECTIVES

88-06-2



REGISTERED ARCHITECT



Architectural, Planning, Landscape and
Interior Design Services