



Londen Land Company, LLC

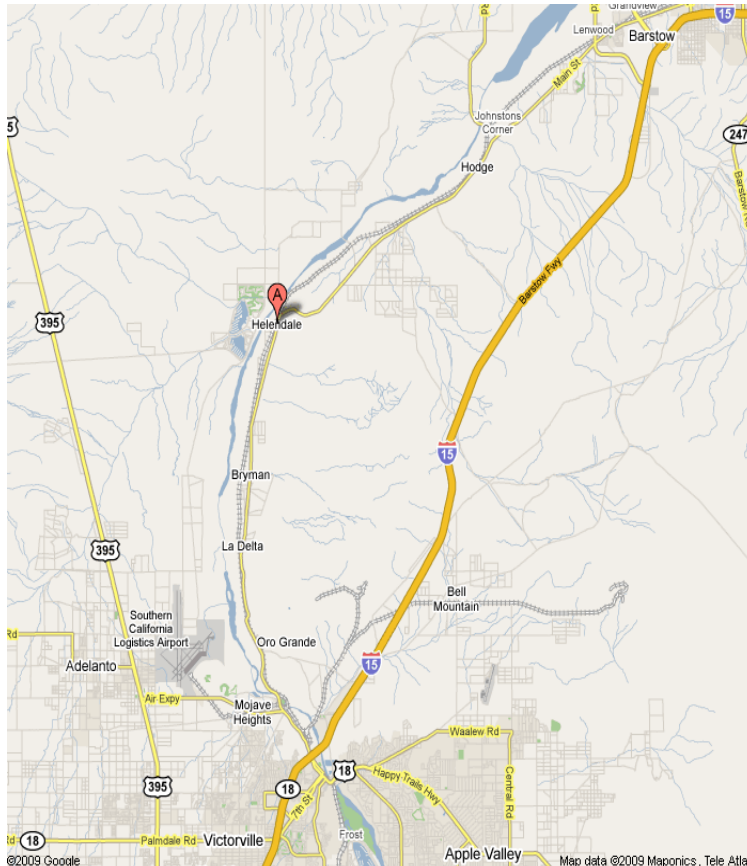
RESIDENTIAL LAND AVAILABLE
320 +/- acres
Helendale, CA

LOCATION: National Trails Highway, San Bernardino County

SIZE: 320 acres

CURRENT LAND USE: The Town of Helendale has opened discussions about annexing and zoning this property for various destinies.

APN: 046-703-101



FOR INFORMATION CALL:

THE LONDEN COMPANIES
Jack Londen and Lynn Londen
602-957-1650

4343 East Camelback Road, Suite 400
Phoenix, Arizona 85018
Phone: 602-957-1650 ♦ Fax: 602-840-9765

The information contained herein is from sources deemed reliable. We have no reason to doubt its accuracy but do not guarantee it. It is the responsibility of the person reviewing this information to independently verify it. This package is subject to change, prior sale or complete withdrawal

THIS MAP IS FOR THE PURPOSE
OF AD VALOREM TAXATION ONLY.

Sec.27 & 26, T.8N.,R.4W., S.B.B.&M.

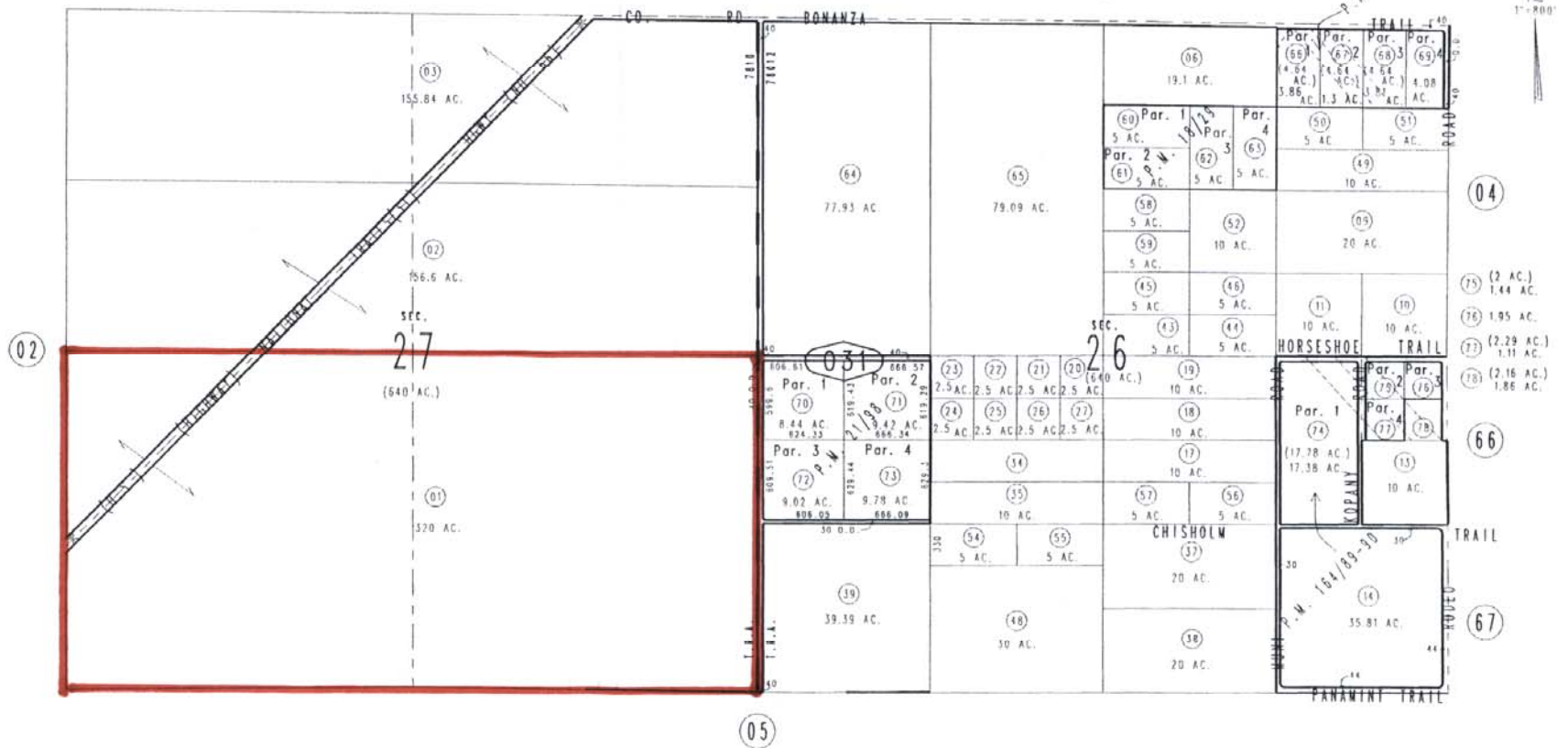
Helendale
Tax Rate Area
78010,78012

0467-03



0466
17

0466
16



Parcel Map No. 13619, P.M. 164/89-90
 Parcel Map No. 2379, P.M. 21/98
 Parcel Map No. 7690, P.M. 81/17
 Parcel Map No. 1855, P.M. 18/29

February 2004

Assessor's Map
 Book 0467 Page 03
 San Bernardino County

REVISED
 04/13/06 KC