



Londen Land Company, LLC

MIXED USE LAND AVAILABLE

202 +/- acres

Town of Florence, AZ

LOCATION: Northwest of 1st Street and Hwy 79

SIZE: 202.729 acres

LAND USE: Refer to map

APN: 200-46-011B, 0060,0070,0080,0100,
200-33-006B, 006C, 006D, 006F, 006G, 0150, 0160

Utilities: *Electric:* Arizona Public Service *Gas:* Southwest Gas
Sewer: Town of Florence *Phone:* Qwest
Water: Town of Florence

IMPACT FEES: Water: \$900 per lot
Sewer \$680 per lot

COMMENTS: Florence is an original territorial town. Founded in 1866, its history reflects the state’s mining, agriculture and native cultures.

This property is directly across the street from the new and under construction Florence County Facility, which will house multiple government agencies.

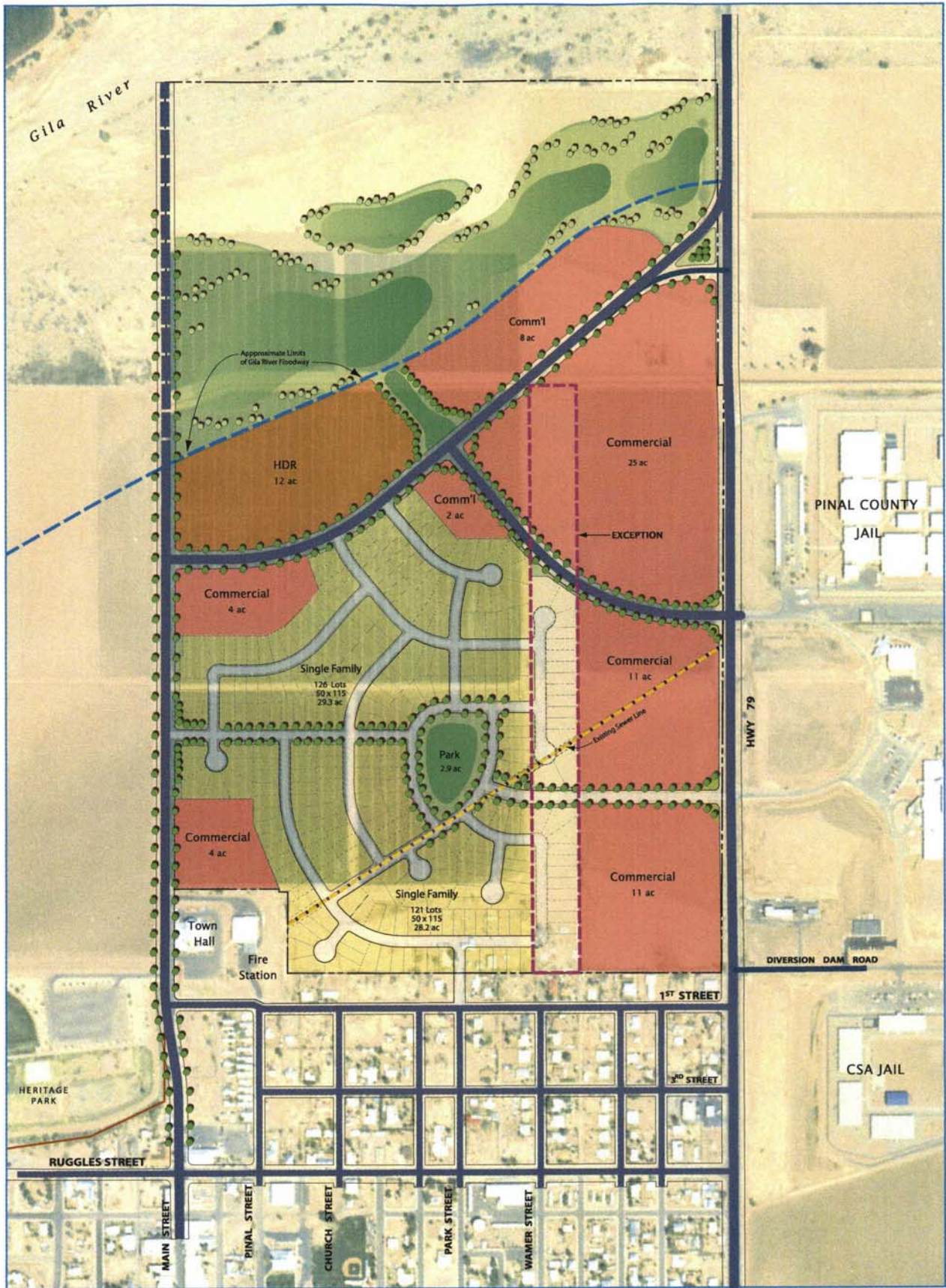
With 5,000 daytime employees commuting to Florence from other areas with virtually no options to live and work in Florence, this property is a prime location for a commercial and residential development.

FOR INFORMATION CALL:

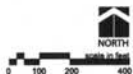
THE LONDEN COMPANIES
Jack Londen and Lynn Londen
602-957-1650

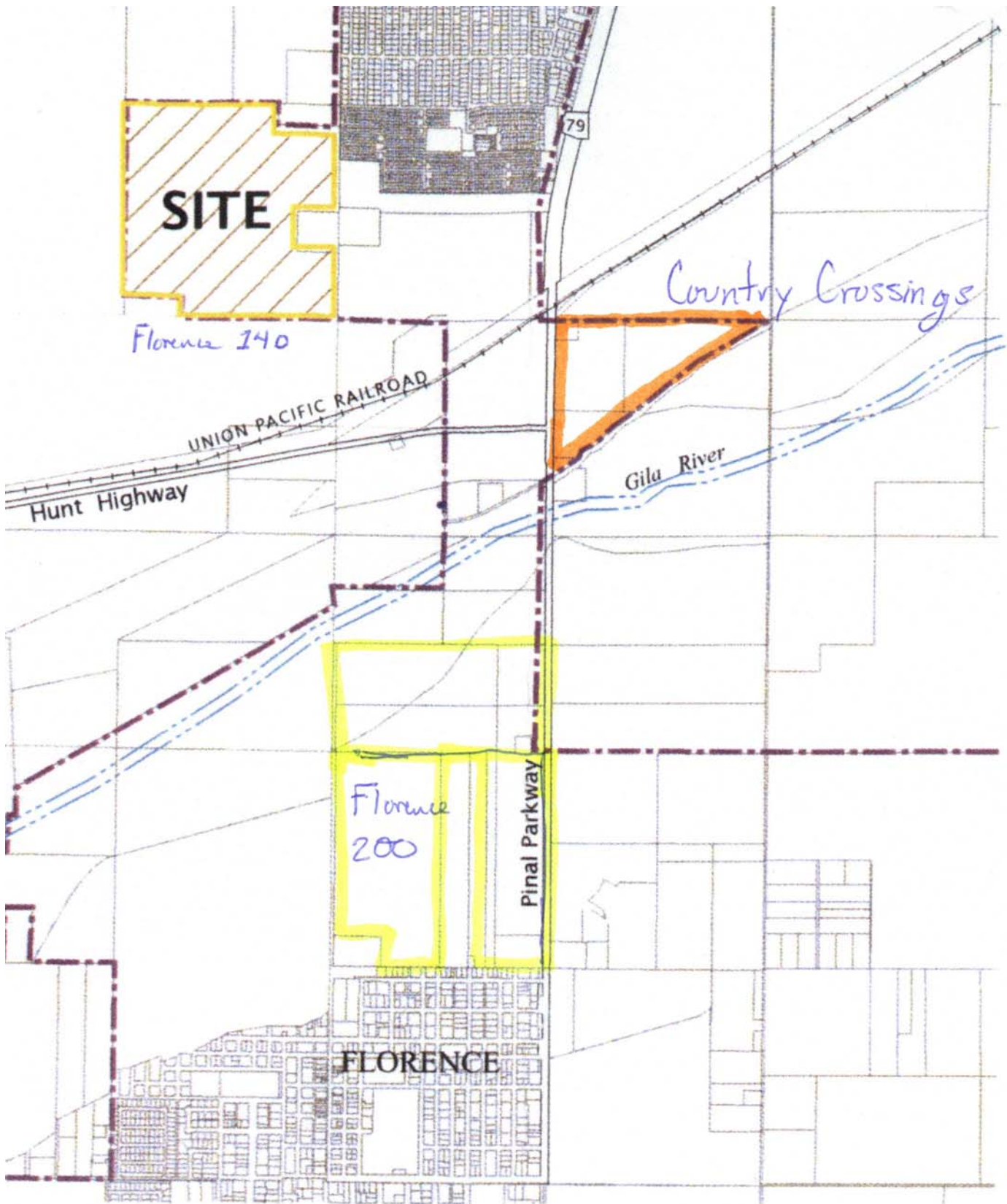
4343 East Camelback Road, Suite 400 ♦ Phoenix, Arizona 85018 ♦ Phone: 602-957-1650 ♦ Fax: 602-840-9765

The information contained herein is from sources deemed reliable. We have no reason to doubt its accuracy but do not Guarantee it. It is the responsibility of the person reviewing this information to independently verify it. This package is subject to change, prior sale or complete withdrawal



CONCEPT PLAN
Londen Property
 Florence, Arizona





VICINITY MAP