

Londen Land Company, LLC
Mixed Use Property Available
249 +/- ACRES
Bullhead City, AZ

LOCATION: Sect 4, Twnshp 20 N, Rnge 21 W of Gila and Salt River Base and Meridian

SIZE: 249.32 acres

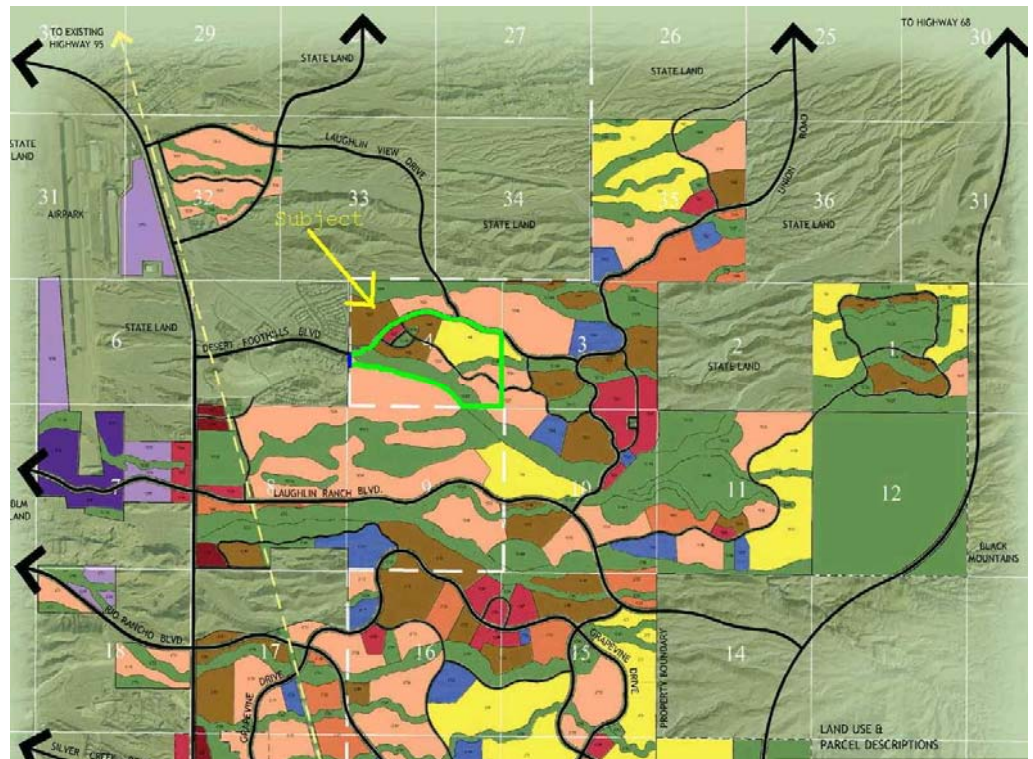
**CURRENT
LAND USE:** Mixed Use

Presented By:



THE LONDEN COMPANIES
Jack Londen and Lynn
Londen
602-957-1650

4343 East Camelback Road, Suite 400
Phoenix, Arizona 85018
Phone: 602-957-1650
Fax: 602-224-2246



The information contained herein is from sources deemed reliable. We have no reason to doubt its accuracy but do not Guarantee it. It is the responsibility of the person reviewing this information to independently verify it. This package is subject to change, prior sale or complete withdrawal.